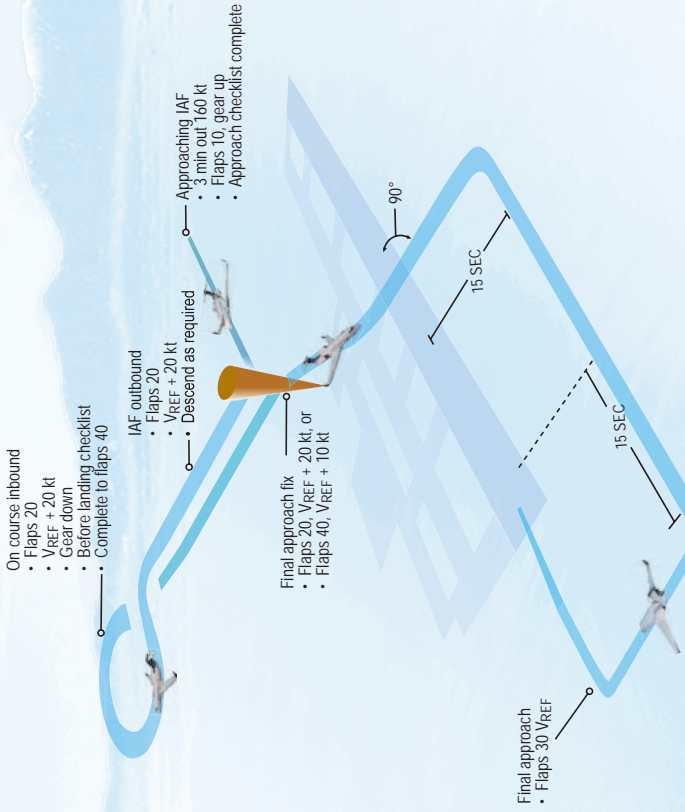


Circling Approach (1 of 4)

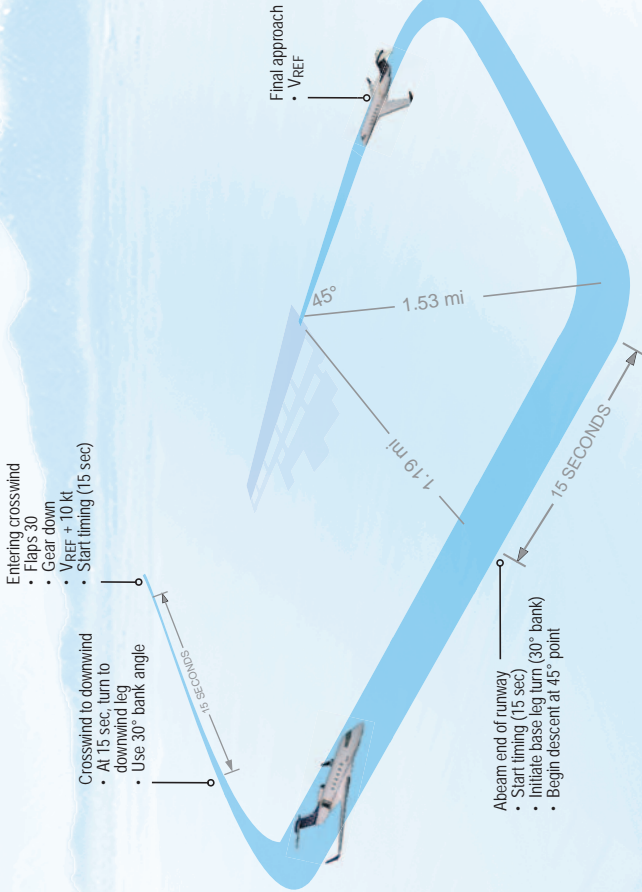
Two Engines



Circling Approach (1 of 4)

Circling Approach (2 of 4)

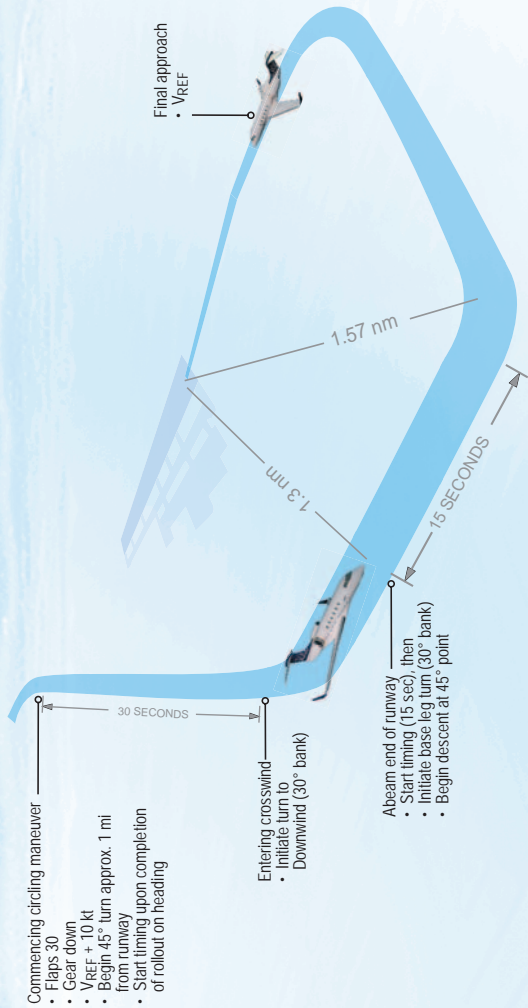
Two Engines



Circling Approach (2 of 4)

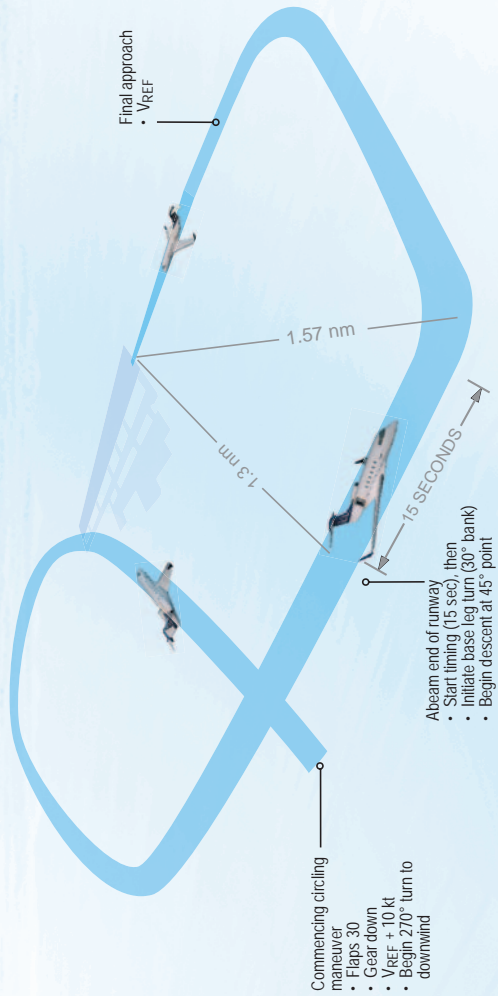
Circling Approach (3 of 4)

Two Engines



Circling Approach (4 of 4)

Two Engines



- Commencing circling maneuver
- Flaps 30
 - Gear down
 - $V_{REF} + 10$ kt
 - Begin 270° turn to downwind

- Abeam end of runway
- Start timing (15 sec), then
 - Initiate base leg turn (30° bank)
 - Begin descent at 45° point

PF
PNF
•••CALL RESPONSE

Circling Approach (4 of 4)
Figure 09-13-07